

MAHURANGI CRUISING CLUB

ENCOURAGING CRUISING AND THE OWNERSHIP, USE AND RESTORATION OF WOODEN BOATS

Mahurangi Regatta - SAILING INSTRUCTIONS

- **Saturday 25th January 2025 on the Mahurangi Harbour.**
- The Mahurangi Regatta is conducted by the Mahurangi Cruising Club (MCC).
- The MCC accepts no responsibility for damage, loss or injury as stated in the Conditions of Entry.
- The responsibility for a boat's decision to participate in the Regatta or to continue sailing is hers alone.
- The events will be governed by these Sailing Instructions and the International Regulations for Preventing Collisions at Sea 1972 and the Maritime NZ Rules Part 22: Collision Prevention.
- This is a convivial event. Entrants must take all necessary steps to avoid collisions. **NO PROTESTS**
- VHF Channel77 will be used for any course change or other communications to participating vessels.

ENTRIES


All Entries must be made Online and submitted with fees **by midnight** Thursday 23rd January 2025

No Late Entries. To enter go to mahuranguicruisingclub.org and read the Notice of Regatta for entry procedure.

Please fly appropriate division flag (reuse from last year!) - not available at Sullivans Bay as before.

The Yearbook 2025 may be available from the MCC Table by Scott Homestead.

In the event of cancellation the yearbook will be sent to all entrants.

DIVISIONS	IDENTIFICATION FLAG	ENTRY FEE	START TIME
A Class Division	Orange 	\$50	11.00
Mahurangi Division	Red 	\$50	11.20
Traditional Spirit	Blue 	\$50	11.20
L Class Mullet Boat	No Flag - L sail insignia	\$50	11.20
Mid-Century Classic	Green 	\$50	11.40
Te Haupa Division	Yellow 	\$30	12.00
Sailing Dinghy Division	White 	\$20	12.10

Start / Finish

The start / finish line is between the committee boat 'Jane Gifford' and an orange buoy
The flag colour will indicate the starting Division
Start / finish contact - VHF Channel 77

Start Procedure

10 min - Division colour flag raised - Hooter
5 min - 'P' Flag Raised - Hooter
1 min - 'P' Flag Lowered - Hooter
Start - Division flag dropped - Hooter

- The start line will be between the flagstaff on the committee boat flying a large MCC flag anchored off Sullivan's Bay (or in strong easterly conditions, between Oaua Point and Scott's Landing - refer to Course #2) and an Outer Distance Mark (ODM) start buoy.
- All vessels must keep clear of the committee boat and the ODM. Vessels failing to do so have to return to the start by rounding either the start boat or the ODM before restarting correctly, or be disqualified.
- Keep Clear of the start area until after the 10-minute gun for your division.
- Boats over the start line in the 10 minutes before the start gun must return to start rounding either the the start boat or the ODM before restarting.
- Restarting boats must keep clear of all starting vessels. An attempt will be made by Regatta Committee to notify on Ch77, boats over the line which do not return, to give them the opportunity to restart.
- Boats failing to return will have either 10 minutes added to their elapsed time, or disqualified if the Regatta Committee decides there was no attempt to start correctly.

Before sailing the second lap all yachts shall pass through a gate between the ODM buoy and committee boat. The ODM could be moved after the start to narrow the gate (and the finish line).

The Regatta is not being sailed under Racing Rules.

No luffing or barging at the start and overtaking vessels have to keep clear.

Finish Line

- The finish line will be between the committee boat and outer distance marks - as for the start line.
- No times will be recorded after 1600 hrs.
- Finishing yachts are responsible to be recognised by the finish boat. If unsure confirm on Channel 77.
- All Boats without a Sail Number must identify themselves at the finish or their time may not be taken.

Handicaps

The Handicapper will allot each entry a TCF handicap.

Rules Covering All Events

- No extras.
- All headsails must be attached to the forestay/s. (Exception for traditional free flying jibs)
- No spinnakers, no hoisted furled code 0 (or similar), or mizzen staysails.
- Headsails can be poled out.
- No sailing inside (permanently) moored boats and the shore or your vessel will be disqualified.

Easterly Weather

- In extreme easterly conditions; courses, start boat position and starting times may be changed.
- The start may be moved to between Oaua Point and Scott's Landing - refer to Courses #3 and #4.
- Skippers are required to check Channel 77 for any changes.

Shortened Course

If there is a lack of wind, the course will be shortened to one lap of the course instead of two by:

- A pre-race announcement on Channel 77 and code flag 'S' displayed below the MCC flag.
- If the course is shortened after all starts have commenced at 1210, this will be indicated by the flying of the 'S' below the MCC flag and accompanied by two sound signals as the first boats of the divisions sailing the two lap course approach the Start/Finish line

Hazards

- We draw competitor's attention to the reefs at both ends of Saddle Island (Te Haupa). The reef at the northern end is marked by a red buoy and at the southern end by a cardinal beacon.
- Unmarked reefs extend from the eastern side of the island.
- Warning! The Northern buoy may not be exactly at chart position due to tide/wind conditions.
- The rock shelf extending south-west off Sadler Point is unmarked and not visible at high tide. **DO NOT** pass too closely especially at high tide.
- Please consult the latest official charts for accurate navigation use - not the attached course maps.
- Keep a close watch for moored vessels especially at Jamieson Bay and Scotts Landing.
- Boats may be anchored in the fairway or under way on the Regatta course so keep an active lookout.

International Regulations For Preventing Collisions at Sea

- These races will also be governed the International Regulations For Preventing Collisions at Sea 1972.
- Please consult the Official NZ version - Maritime NZ Rules Part 22: Collision Prevention.
- Note these Regulations differ from Racing Rules in some important matters such as when overtaking and right of way close to start and turning marks. No tactical luffing.
- Any recourse for a collision or incident between vessels is through your insurance company according to your policy and/or through the NZ Courts and not the Mahurangi Cruising Club, Regatta Committee or a Protest Committee (there is none).
- Please be aware that this can be a very expensive exercise.
- Avoid contact with other yachts and boats in the harbour at all costs !

Tides

SATURDAY 25 JANUARY 2025

HighWater	04:31 hrs	2.38m
Low Water	10:40 hrs	1.09m
High Water	16:33 hrs	2.38m
Low Water	23:03 hrs	1.00m

VHF - Channel 77

Bryan Taylor	-	Officer of the Day	-	021 053 1637
Richard Dodd	-	Commodore	-	021 840 561
Hugh Gladwell	-	Vice-Commodore	-	021 606 409
Martin Howson	-	Club Captain	-	027 472 3494
Stephen Horsley	-	Regatta committee	-	027 280 7497

We look forward to a great weekend and seeing you there . . .

The Regatta Courses are shown on the following Course Sheets:

Mahurangi Cruising Club Regatta - Course #1

For the A Class Division

DIAGRAM ONLY. NOT TO BE USED FOR NAVIGATION. PLEASE CONSULT AN OFFICIAL CHART



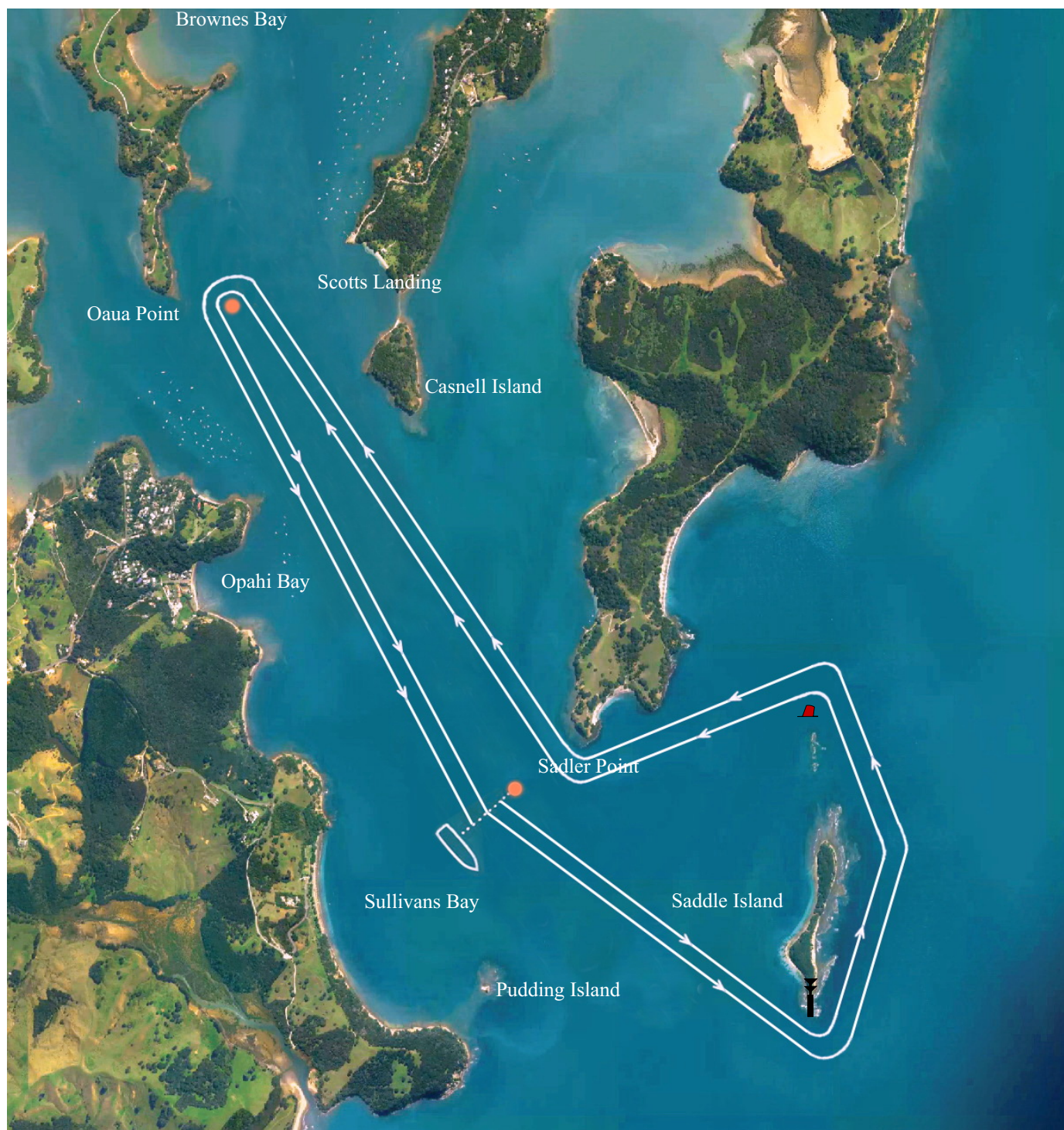
COURSE #1 - For the A Class Division Only

Startline is between the committee boat moored off Sullivan's Bay and the Outer Distance Mark (ODM) off Sadler Point. Start in a south easterly direction, take Saddle Island (Te Haupa) to port, passing west through Blanche Channel between Moturekareka port and Motuketekete to Sadler Point starboard then passing north of the ODM to a laid mark off Oua Point to port, to the finish between the committee boat and the ODM/finish mark.

NOTE: In strong easterly conditions the start/finish line will be moved up harbour, to between Oua Point and Scott's Landing. **Refer Course #3**

Mahurangi Cruising Club Regatta - Course #2

DIAGRAM ONLY. NOT TO BE USED FOR NAVIGATION. PLEASE CONSULT AN OFFICIAL CHART



COURSE #2 - All Divisions except A Division. Te Haupa Div - Sailing Dinghys 1 Lap Only

Startline between the committee boat moored off Sullivans Bay and the Outer Distance Mark (ODM) off Sadler Point. Start in a south easterly direction, take Saddle Island (Te Haupa) port and the northern reef buoy to port, Sadler Point starboard, then a laid mark off Oua Point to port, then through a gate between Start/Finish Boat and the ODM, then Saddle Island and the northern reef buoy to port, Sadler Point starboard, Oua Point mark port, to the finish.

The ODM is a gate mark for the second leg of the course and taken to port.

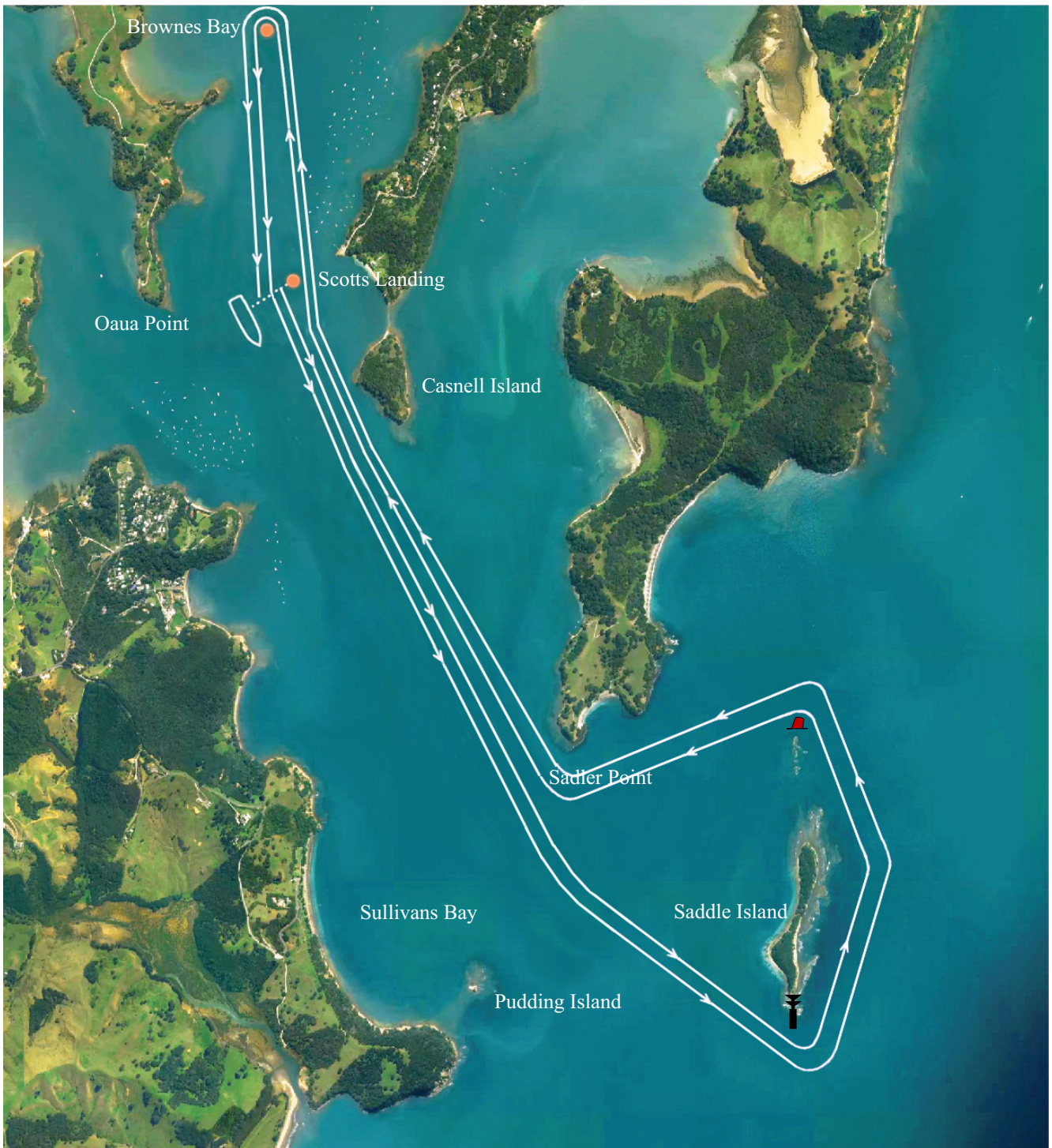
NOTE: In strong easterly conditions the start/finish line will be moved up harbour, to between Oua Point and Scott's Landing. **Refer Course #4 and #5**

Mahurangi Cruising Club Regatta - Course #3

ALTERNATIVE COURSE FOR STRONG EASTERLY CONDITIONS

For A Class ONLY

DIAGRAM ONLY. NOT TO BE USED FOR NAVIGATION. PLEASE CONSULT AN OFFICIAL CHART



COURSE #3 - A Class Division ALTERNATIVE COURSE FOR STRONG EASTERLY CONDITIONS

Startline is between the committee boat moored off Oua Point and the Outer Distance Mark (ODM) positioned towards Scotts Landing. Starting in a south easterly direction, take the Saddle Island (Te Haupa) port, Sadler Point starboard, then a laid mark in Browns Bay port, going through the ODM gate port, back around Saddle Island (Te Haupa) port, Browns Bay mark port, to the finish.

NOTE:

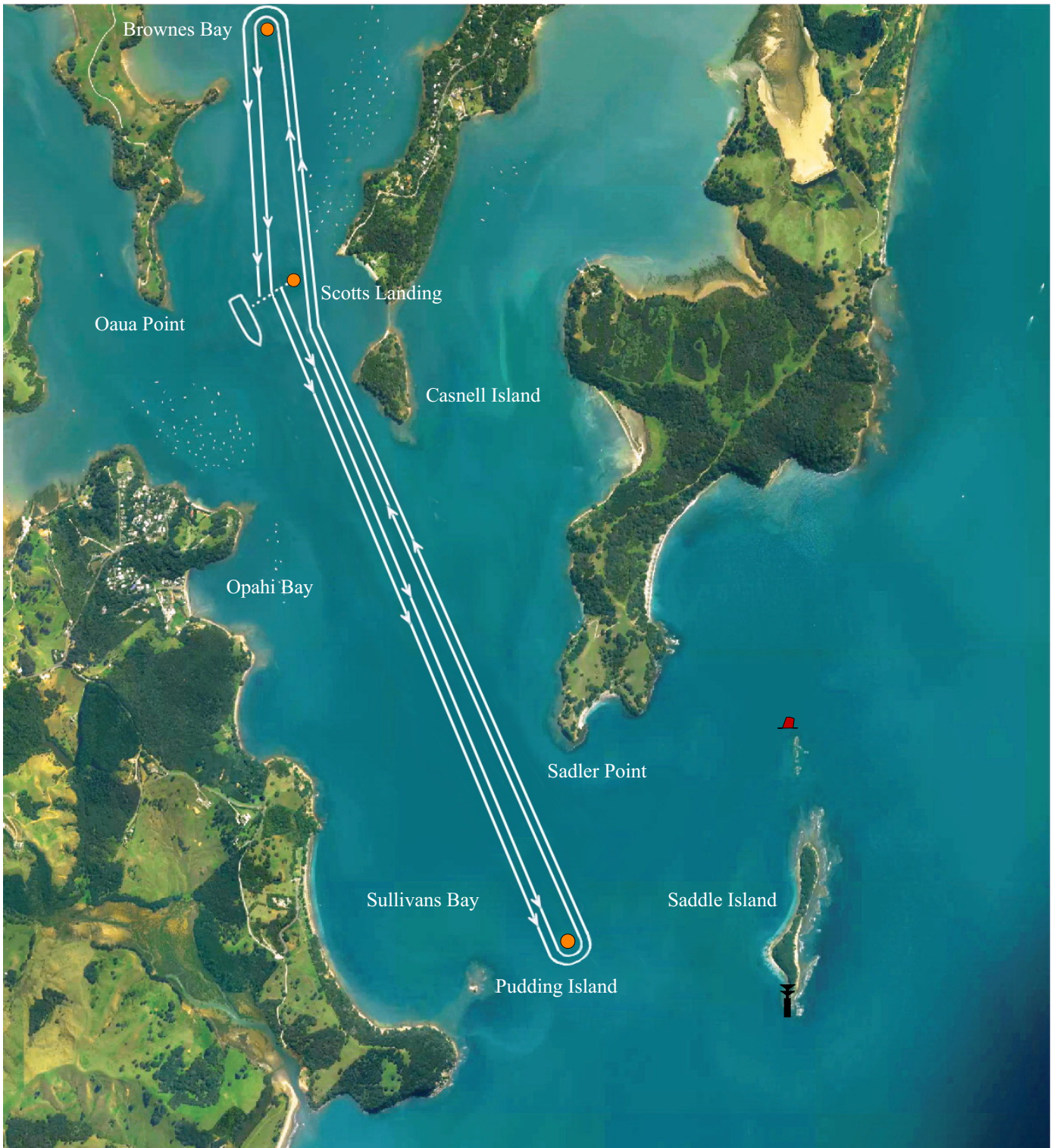
The reef at Saddle Island's northern end is marked by a red buoy and at the southern end a beacon. The ODM start buoy is a fairway mark for the second leg of the course.

Mahurangi Cruising Club Regatta - Course #4

ALTERNATIVE COURSE FOR STRONG EASTERLY CONDITIONS

For all Divisions except A Class, Te Haupa, Centreboard Classes

DIAGRAM ONLY. NOT TO BE USED FOR NAVIGATION. PLEASE CONSULT AN OFFICIAL CHART



COURSE #4 - MAIN EVENTS ALTERNATIVE COURSE FOR STRONG EASTERLY CONDITIONS

Startline is between the committee boat moored off Oua Point and the Outer Distance Mark (ODM) positioned towards Scotts Landing. Starting in a south easterly direction, take the Pudding Island Mark (set between Sullivans Bay and Saddle Island) port, then a laid mark in Browns Bay port, going through the ODM gate port back to the Pudding Island mark port, Browns Bay mark port, to the finish.

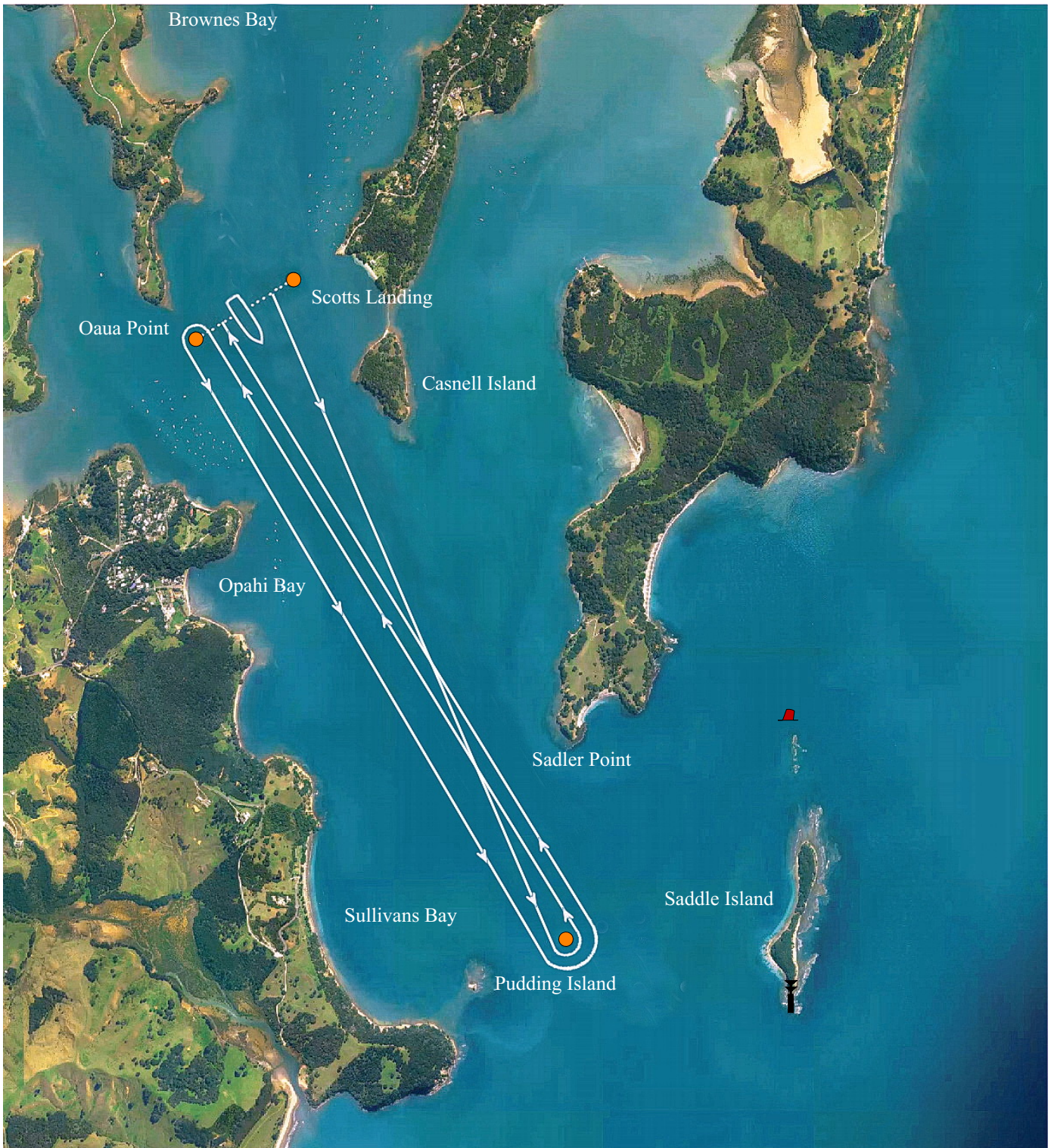
The ODM start buoy is a fairway mark for the second leg of the course.

Mahurangi Cruising Club Regatta - Course #5

ALTERNATIVE COURSE FOR STRONG EASTERLY CONDITIONS

For Te Haupa and Centreboard Classes

DIAGRAM ONLY. NOT TO BE USED FOR NAVIGATION. PLEASE CONSULT AN OFFICIAL CHART



COURSE #5 - TE HAUPA TROPHY ALTERNATIVE COURSE FOR STRONG EASTERLY CONDITIONS

Startline is between the committee boat moored off Oua Point and the Outer Distance Mark (ODM) laid in a Northeast direction towards Scotts Landing. Start in a south easterly direction, to take the Pudding Island Mark (set between Sullivans Bay and Saddle Island) port, then the laid finish mark off Oua Point (Southwest of the Jane Gifford) port, then back to the mark off Pudding Island port, to finish between the committee boat and the finish mark off Oua Point.

This is twice round the course.

The Start and Finish marks are not the same, being on opposite sides of the committee boat.